

# FLOWING WITH INNOVATION

Premium Piping  
Systems &  
Sustainable  
Water Solutions

**PIPE TRADERS**

**DAHVALAL T SHAH**

**ARHAM ENTERPRISES**



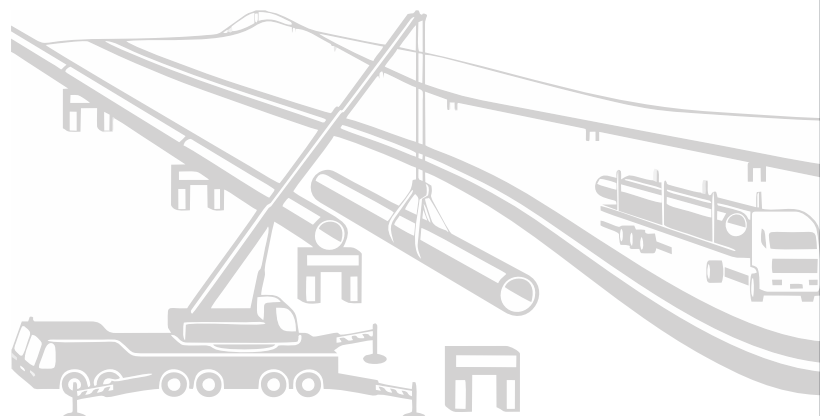
# INNOVATING INFRASTRUCTURE, POWERING PROGRESS

## PIONEERING SOLUTIONS FOR A SUSTAINABLE FUTURE

We go beyond the conventional role of a pipe trading company. As an integrated solutions provider, we specialize in delivering comprehensive piping solutions, while simultaneously contributing to major infrastructure projects across diverse sectors. From water management and industrial applications to firefighting systems and sanitation, we empower industries to thrive.

With a strong focus on quality, innovation, and sustainability, We offers not just products but a partnership that drives growth. Our expertise extends to executing large-scale projects, ensuring seamless installations, and providing cutting-edge solutions for the development of cities, industries and townships.

We are committed to shaping a sustainable future with state-of-the-art technology and premium services, making company a leader in infrastructural development and piping solutions.





## TABLE OF CONTENTS

About Us	01	Water Meter	14
Areas of Expertise	02	Landscape Irrigation Solutions	15
GI Pipe & Fittings / MS Pipes & Fittings	03	Valves (Agriculture, Industrial, Domestic)	16
MS Hollow Section (Square & Rectangular)	04	Silent Pipes & Pex Plumbing Solutions	17
Fire Fighting Valves & Equipment	05	PVC Pipe & Fittings (Plumbing, Drainage, Agriculture)	18
Pipe Supporting Clamps & Accessories	06	Paints	19
HDPE & MDPE Pipes & Fittings	07	CP Faucets & Sanitaryware	20
Electrofusion Fittings	08	Water Storage Tanks	21
HDPE Welding Machines & Tools	09	Solvent, Adhesives & Waterproofing Solutions	22
DWC Pipes & Fittings (Cable & Drainage)	10	Manhole Covers & Drain Channel / Rainwater Harvesting	23
Piping Solutions – City Layout Diagram	11–12	3M Fully Automatic Water Softeners Solutions	24
DI & CI Pipe & Fittings	13		

## ABOUT US

Founded in 1968 in Indore by the late Mr. Amrit Bhai Shah and Mr. Navin Bhai Shah, the company began its journey with the distribution of G.I. and M.S. pipes and fittings. Driven by a customer-first approach and unwavering dedication, the company quickly established itself as a trusted name in Central India's distribution sector. Over the years, it strengthened its market presence and emerged as one of the leading distributors in Indore and neighboring regions.

With a legacy spanning over five decades, the company has earned a strong reputation built on the core principle of "Earning Trust with Business." Its commitment to delivering innovative, reliable, and high-quality piping and plumbing solutions has empowered industries and supported infrastructural growth. Today, the company's offerings extend from traditional G.I. and M.S. pipes to advanced PVC and HDPE solutions, construction chemicals, paints, CP and sanitary fittings- all backed by a focus on precision, durability, and sustainability.

## MISSION

To provide cutting-edge piping and plumbing solutions that uphold quality, innovation, and sustainability while exceeding customer expectations. Our mission is to empower industries, support communities, and contribute to a better tomorrow through reliable products and exceptional services.

## VISION

To be a global leader in the piping and plumbing industry by fostering innovation, setting high standards of excellence, and championing sustainable solutions that inspire trust and shape a better world for future generations.

# AREAS OF EXPERTISE

- Building & Infrastructure
- Industrial Applications
- Agricultural Solutions
- Government Infrastructure



## Building & Infrastructure

We provide essential materials for residential and commercial construction projects. Our comprehensive range includes durable pipes and fittings, premium paints, elegant CP sanitary fittings and all designed to support the foundational, structural, and aesthetic needs of every building. Whether it's safety, style, or long-lasting performance, we deliver the reliability that construction demands.



## Industrial Applications

We cater to various industrial sectors, supplying pipes and fittings that meet the rigorous standards required for manufacturing, processing, and other industrial activities. Our products are designed to withstand high pressures, temperatures, and corrosive environments, ensuring optimal performance and reliability.



## Agricultural Solutions

Our products play a crucial role in agricultural activities, including irrigation systems, water supply us. By delivering robust and efficient piping solutions, we help farmers and agricultural enterprises optimize their operations and promote sustainable farming practices.



## Government Infrastructure

We collaborate with diverse government entities to supply high-quality pipes and fittings for infrastructure projects, public utilities, and community development initiatives. Our reliable products ensure the longevity and efficiency of government projects across the nation.



## GI PIPE & FITTINGS

Galvanized Iron (GI) pipes and fittings are renowned for their durability and resistance to corrosion. They are manufactured by coating iron or steel pipes with a protective layer of zinc, which enhances their longevity and performance in various applications.



### COMMON USES:

#### WATER SUPPLY SYSTEMS:

GI pipes are frequently used in residential, commercial, & industrial plumbing to transport potable water.

#### FIRE FIGHTING SYSTEMS:

Their robust construction makes them ideal for sprinkler and fire protection systems.

#### AGRICULTURE:

Widely used in irrigation systems, GI pipes help ensure efficient water distribution in farming activities.

#### CONSTRUCTION:

Utilized in building scaffolding, structural applications, & support frameworks due to their strength & durability.



## MS PIPES & FITTINGS

Mild Steel (MS) pipes and fittings are widely known for their strength, durability, and versatility. They are crafted from mild steel, which has a low carbon content, providing a good balance of flexibility and toughness. These qualities make MS pipes and fittings suitable for a wide range of applications.



### COMMON USES:

#### INDUSTRIAL APPLICATIONS:

They are used in various industrial processes, including the transportation of fluids and gases, manufacturing of machinery and equipment

#### CONSTRUCTION:

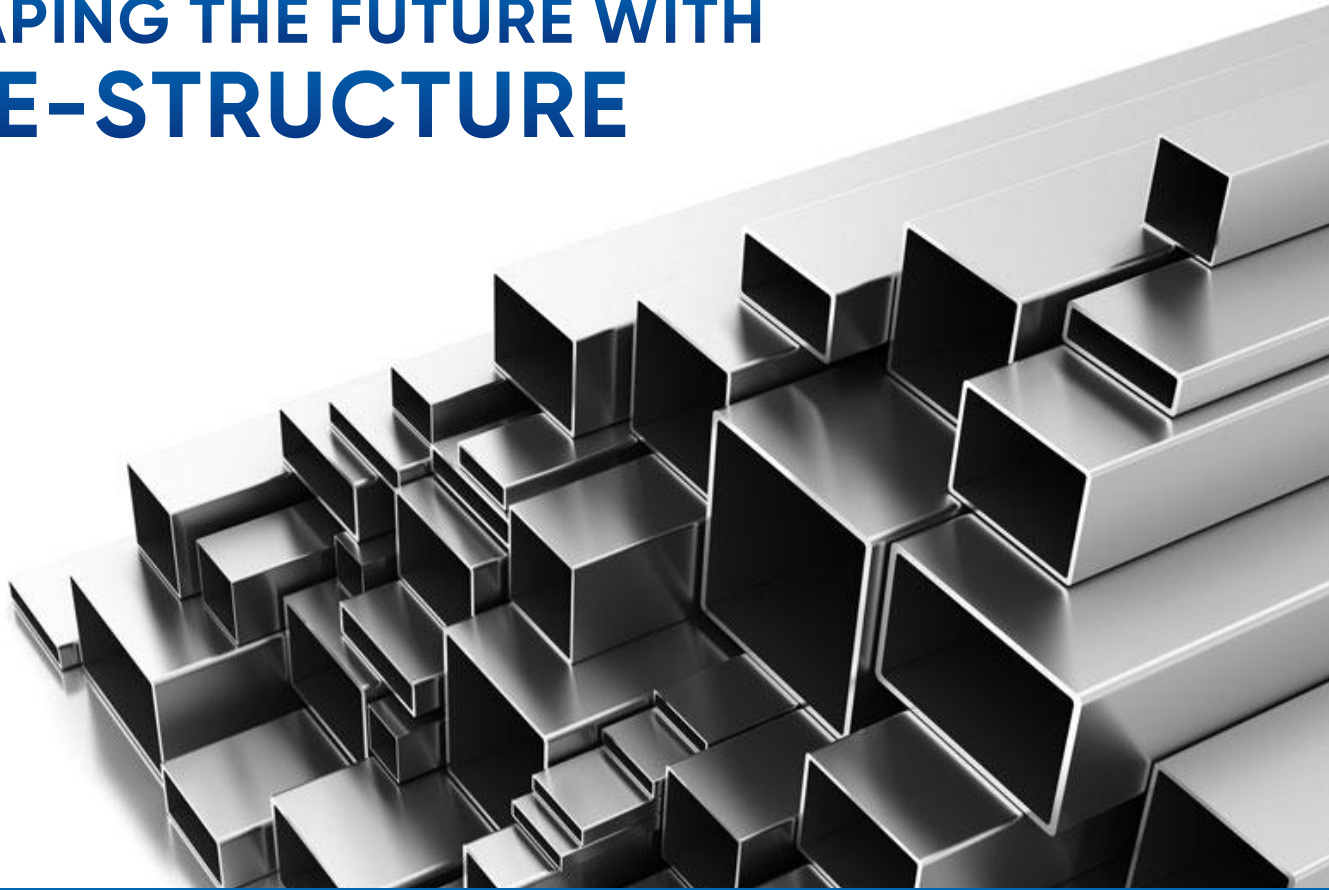
MS pipes are widely employed in the construction industry for building frameworks, scaffolding, and support structures due to their strength and flexibility.

#### GAS PIPING:

They are frequently used for gas distribution networks, both for natural gas and liquefied petroleum gas (LPG).



# SHAPING THE FUTURE WITH PRE-STRUCTURE



## MS HOLLOW SECTION (Square & Rectangular)

Mild Steel (MS) Hollow Sections, available in square and rectangular shapes, are commonly used in construction and engineering projects. Their high strength-to-weight ratio makes them ideal for frameworks, supports, and architectural designs that demand durability, stability, and efficiency. MS Hollow Sections offer versatility, ease of fabrication, and long-lasting performance, making them a preferred choice for structural and industrial applications.

### Key Features:

- High strength-to-weight ratio
- Versatile and easy to fabricate
- Durable and stable for long-term use
- Suitable for construction, fabrication, and architectural designs



### Primary Uses:

- Industrial Sheds
- Columns and Trusses
- Shopping Malls
- Furniture
- Airport Terminals
- Railing Facade

# FIRE FIGHTING VALVES & EQUIPMENT

Firefighting systems are critical for safety, and the right equipment can save lives and minimize property damage. Our range of fire fighting valves and equipment is designed to provide reliable and efficient solutions for rapid responses in case of a fire. These high-quality products are engineered for both residential, commercial and industrial needs, ensuring quick access to water and enhanced fire safety. Our products meet the highest standards of performance, durability, and safety, providing peace of mind when it matters the most.

## Our Products Include

### Fire Hydrant



Provides quick, reliable access to water for firefighting in high-pressure situations.

### Hose Reels & Box



Allow for quick hose deployment, ensuring rapid response to fires.

### Fire Sprinklers



Automatically activate during a fire to suppress flames and minimize damage.

# PIPE SUPPORTING CLAMPS & ACCESSORIES

Our Pipe Supporting Clamps and Accessories are designed to provide stability and secure mounting for pipe systems. Engineered for strength and durability, they ensure long-term performance in industrial, commercial, and residential application.

## Features:

- High-strength materials for durability
- Corrosion-resistant finish
- Easy installation and adjustment

## Applications:

- Plumbing and HVAC systems
- Industrial piping setups
- Firefighting and drainage systems



# MANHOLE COVERS, FRP Grating DRAIN CHANNEL

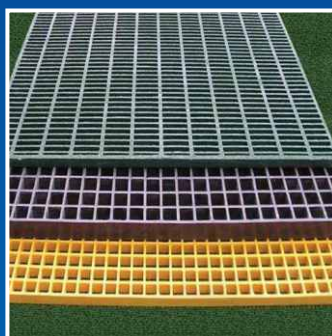
Our Manhole Covers are engineered for unmatched durability and strength, making them ideal for urban drainage systems. Available in a range of load capacities, they are designed to withstand heavy-duty applications while ensuring safety and reliability.

## Features:

- Superior strength and durability
- Corrosion-resistant materials
- Available in multiple load capacities

## Applications:

- Urban drainage systems
- Industrial and municipal projects
- Roadways and heavy-duty infrastructure



# HDPE, MDPE PIPES & FITTINGS

HDPE (High-Density Polyethylene) and MDPE (Medium-Density Polyethylene) pipes are designed for a variety of applications across different industries. HDPE pipes are highly durable, corrosion-resistant, and ideal for infrastructure, water supply, agriculture, and industrial sectors. MDPE pipes are perfect for potable water supply and gas distribution lines. Both pipes provide flexibility, cost-efficiency, and longevity in various applications, ensuring minimal maintenance and excellent performance.

## Key Features:

- Corrosion and chemical-resistant
- High durability and flexibility
- Long-lasting and low maintenance
- Easy to install and transport

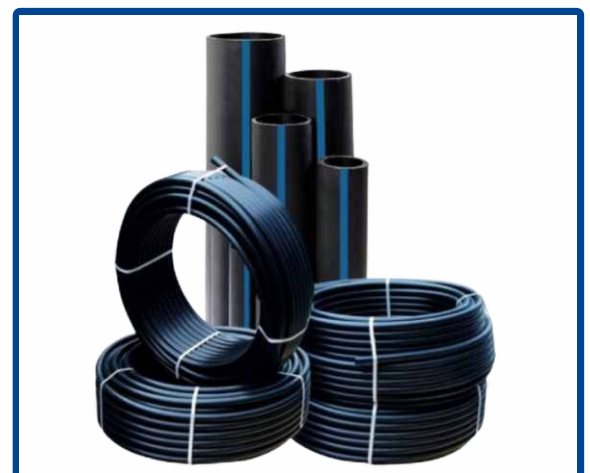
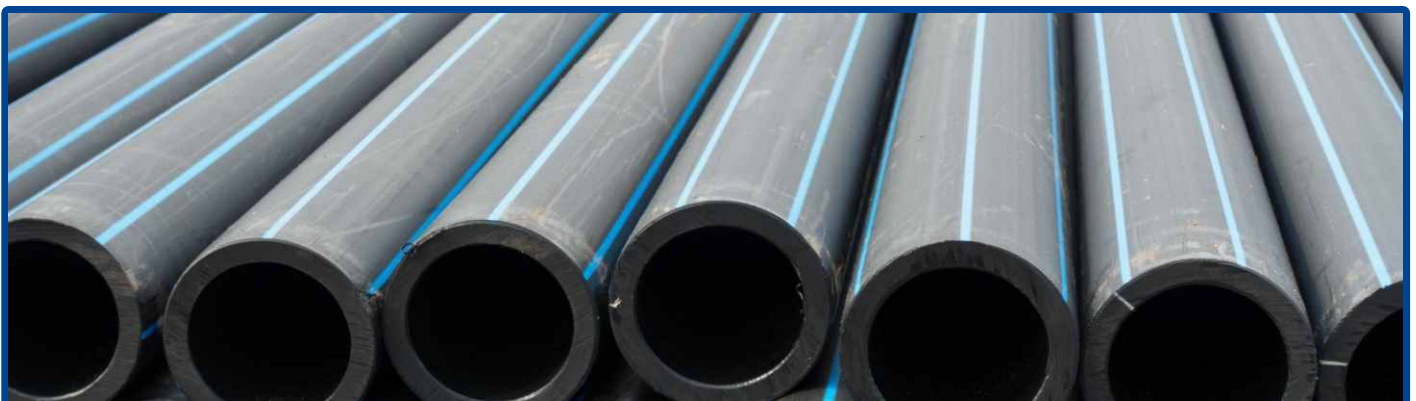
## Comprehensive Piping Solutions for Diverse Applications

**HDPE Pipes:** Ideal for infrastructure, water supply, agriculture, industrial, and government sectors.

**MDPE Pipes:** Suited for potable water supply and gas distribution lines.

**Lateral Pipes:** Also employed in agricultural irrigation and landscaping.

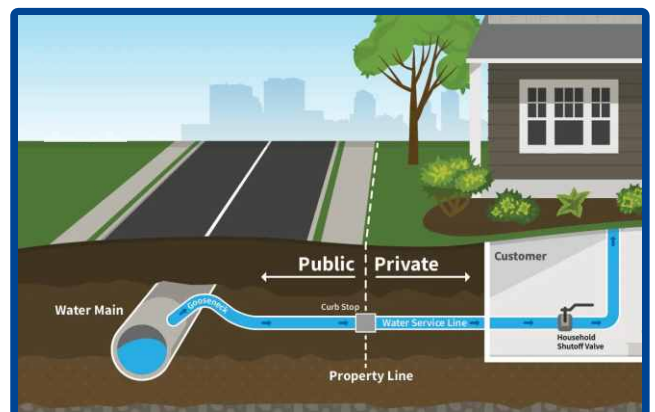
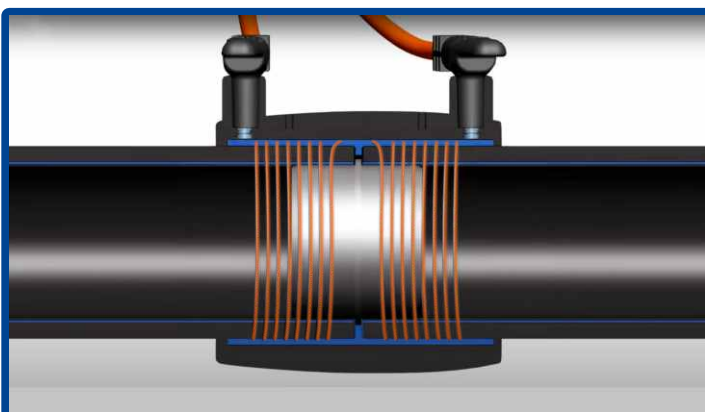
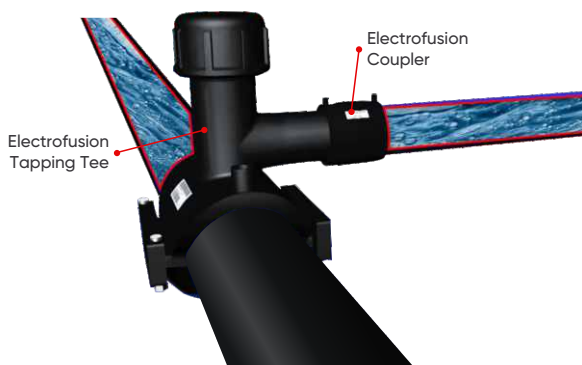
**HDPE Butt Fusion Fittings:** Applicable in infrastructure, water supply, agriculture, industrial, and government sectors.



# INNOVATION IN EVERY CONNECTION

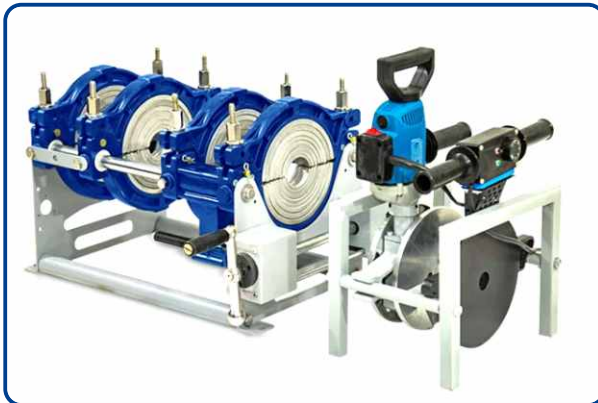
## ELECTROFUSION FITTINGS

Electrofusion Fittings are designed to create strong, leak-proof connections in HDPE & MDPE piping systems. Engineered for precision and durability, they simplify installation processes while enhancing the efficiency and reliability of the overall system. Ideal for use in industrial, municipal, and agricultural applications, these fittings provide excellent resistance to corrosion and wear, ensuring long-term performance under various conditions. Whether for water supply, gas distribution, or wastewater management, Electrofusion Fittings deliver dependable solutions for modern infrastructure needs.



# HDPE WELDING MACHINES & TOOLS

Our advanced HDPE Welding Machines and Tools offer precise, durable, and efficient solutions for seamless pipe connections. Engineered for high performance, these tools are indispensable for infrastructure, water supply, and industrial projects. They ensure reliable joints, reduce downtime, and enhance project efficiency, making them the preferred choice for modern piping applications.



## HDPE Welding Machines & Tools for Seamless Connections

### Butt Fusion Machines:

For strong & seamless pipe joints.

### Electrofusion Machines:

Ensures leak-proof connections.

### Welding Heater:

Provides consistent heat for precision welding.

### Drill Tool:

Designed for efficient pipe drilling tasks.

### Pipe Cutter and Scraper:

Offers clean and smooth pipe edges.

### Alignment Tool:

Ensures precise pipe alignment during welding.

### Squeeze-off Tool:

Temporarily stops flow for maintenance.

### Saddle Holder (Top Load Tool):

Stabilizes pipes during welding.

### Pipe Hack Saw Blade:

For accurate pipe cutting.



# DWC PIPES & FITTINGS

(CABLE & DRAINAGE)

DWC Pipes are designed for durability and efficiency in cable protection and drainage systems. Their double-wall construction ensures superior strength while maintaining a lightweight profile, making them easy to handle and install. These pipes offer excellent resistance to corrosion and physical wear, making them ideal for both underground and exposed applications in urban infrastructure, sewage systems, and electrical cable management.



## Features of DWC Pipes & Fittings:

- Superior strength and durability
- Lightweight and easy to install
- Corrosion and abrasion resistant
- Ideal for underground and exposed applications

## Primary Uses of DWC Pipes:

- Cable protection
- Drainage systems
- Sewage management
- Electrical cable management



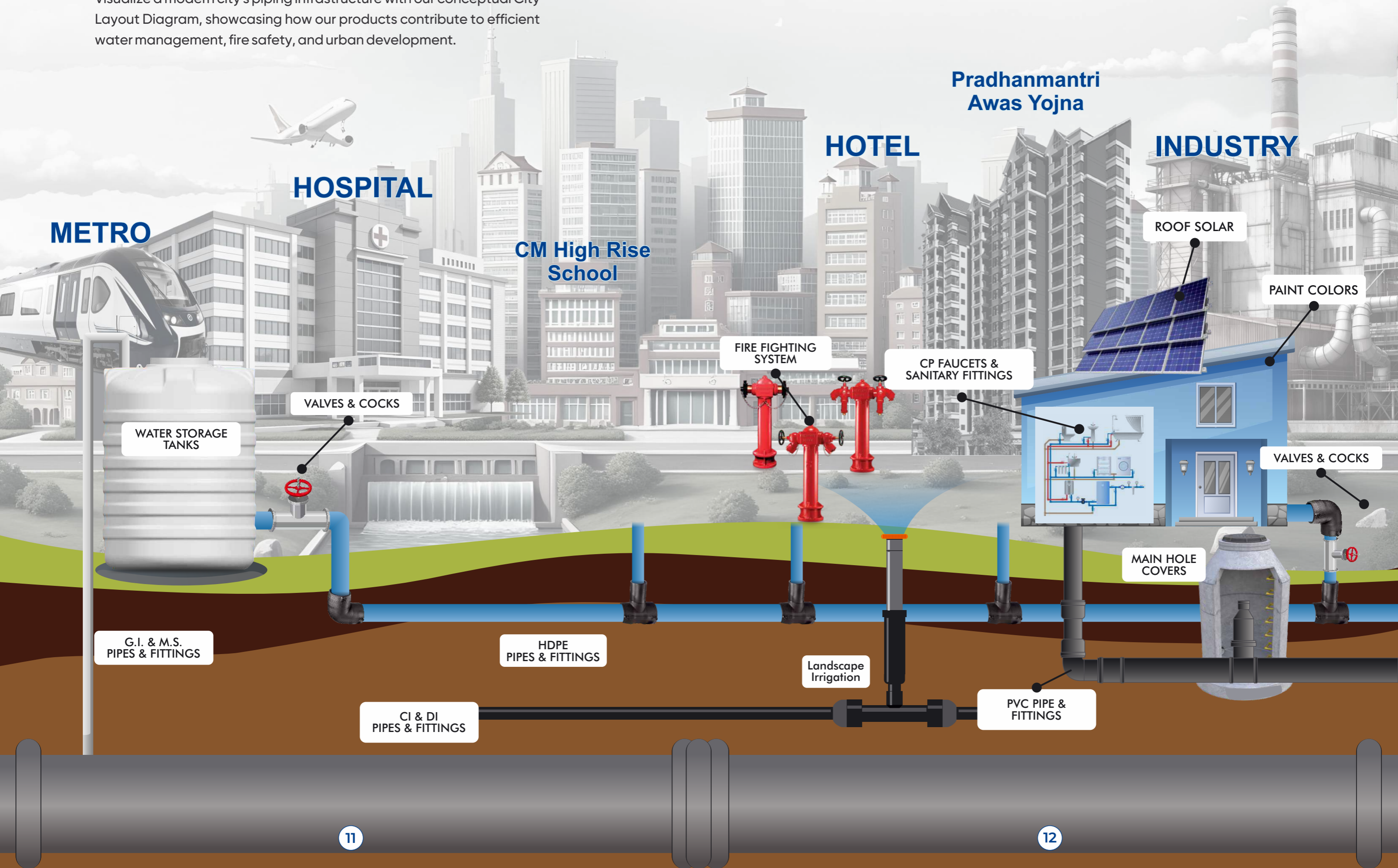
Cable Ducting System



Underground Sewerage System

# Piping Solutions - City Layout Diagram

Visualize a modern city's piping infrastructure with our conceptual City Layout Diagram, showcasing how our products contribute to efficient water management, fire safety, and urban development.



**METRO**

**HOSPITAL**

**CM High Rise School**

**HOTEL**

**Pradhanmantri Awas Yojna**

**INDUSTRY**

ROOF SOLAR

PAINT COLORS

WATER STORAGE TANKS

VALVES & COCKS

FIRE FIGHTING SYSTEM

CP FAUCETS & SANITARY FITTINGS

VALVES & COCKS

G.I. & M.S. PIPES & FITTINGS

HDPE PIPES & FITTINGS

Landscape Irrigation

PVC PIPE & FITTINGS

MAIN HOLE COVERS

## DI & CI PIPE & FITTINGS

Ductile Iron (DI) and Cast Iron (CI) Pipes offer exceptional durability and strength, making them ideal for water supply, sewage systems, and heavy-duty industrial applications. Their ability to withstand high pressure and harsh conditions ensures reliable performance over long periods, making them a top choice for municipal and infrastructural projects.

### Primary Uses of DI & CI Pipes:

- Water and sewage transportation
- Municipal and industrial applications
- Fire protection systems
- Stormwater management



## OPVC Pipe

OPVC pipes are high-strength, pressure-resistant pipes made by molecularly orienting PVC molecules. They offer excellent impact resistance, flexibility, and long service life with reduced wall thickness. Ideal for high-pressure water distribution systems, they are lightweight, corrosion-free, and energy-efficient.

### Primary Uses of OPVC Pipes

- High-pressure water supply
- Agricultural irrigation systems
- Industrial fluid transport
- Infrastructure and urban pipelines





## WATER METER

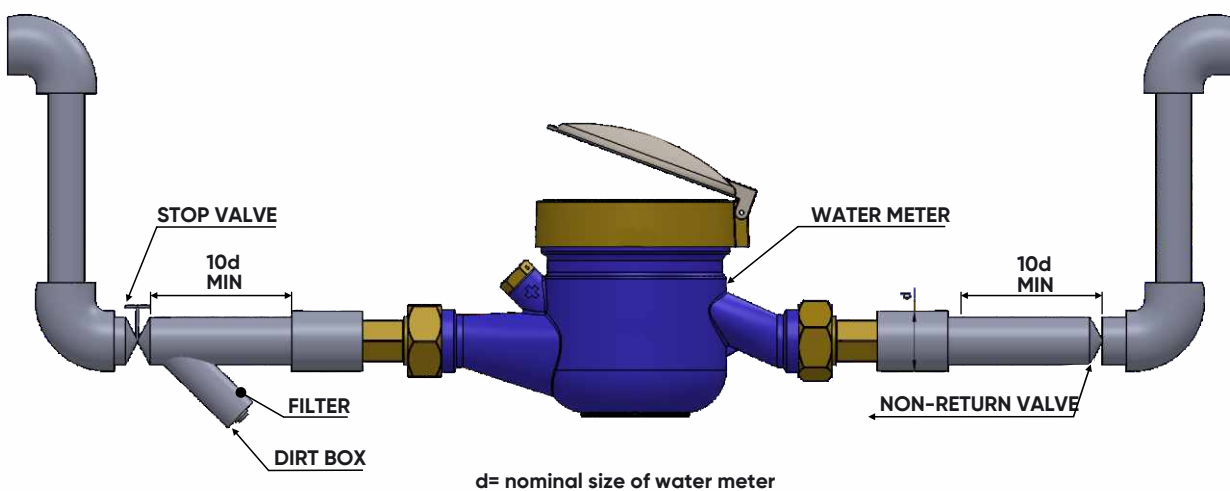
Our water meters provide accurate and reliable measurement, enabling efficient monitoring and management of water usage. Available in a variety of sizes and models, they are suitable for residential, commercial, and industrial applications. These meters help in optimizing water consumption and ensuring cost-effective management of resources.

### KEY FEATURES:

- High accuracy in measurement.
- Durable and long-lasting.
- Easy installation & maintenance.
- Suitable for various applications.

### PRIMARY USES:

- Residential water usage.
- Commercial and industrial water management.
- Water conservation monitoring.



# LANDSCAPE IRRIGATION SOLUTIONS

Our Landscape Irrigation Solutions, including drip systems and sprinklers, are designed to provide efficient water delivery to gardens, parks, and agricultural lands. These solutions ensure optimal water utilization, reduction in waste or no leakages, and promoting healthy growth for plants while conserving resources.

## Primary Uses:

- Residential gardens and lawns
- Agricultural irrigation systems
- Commercial and public landscaping

## Key Features:

- Efficient water distribution
- Reduces water wastage/ Zero leakages
- Customizable for various landscapes
- Easy installation and maintenance



# VALVES

(AGRICULTURE, INDUSTRIAL, DOMESTIC PURPOSE)

We offer a diverse range of valves tailored for agricultural, industrial, and domestic purposes. Our products, including gate valves, ball valves, and more, are designed for precision, durability, and efficient control, ensuring reliable performance in every application.



## Key Features:

- High-quality construction for longevity
- Precision control and regulation
- Wide range of types for various applications
- Reliable and leak-proof performance

## Primary Uses:

- Agricultural water systems
- Industrial fluid control
- Domestic plumbing and water systems



# SILENT PIPES & PEX PLUMBING SOLUTIONS

## KEY FEATURES:

**Noise Reduction:** Silent Pipes effectively minimize drainage noise for a quieter environment.

**Durability:** Resistant to wear, tear, and corrosion for long-term performance.

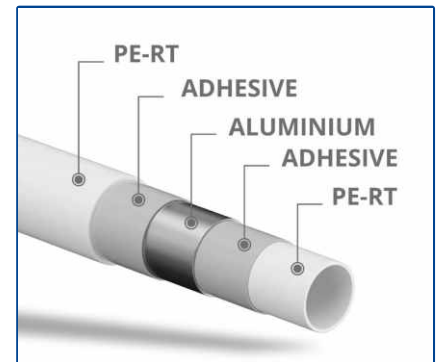
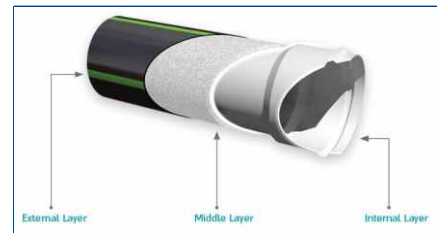
**Flexibility:** PEX Plumbing allows easy installation with fewer fittings.

**Temperature Resistance:** Handles both hot and cold water supply efficiently.

**Leak-Proof:** Ensures secure connections, preventing water wastage.

**Versatile Applications:** Suitable for residential, commercial, and industrial use.

**Eco-Friendly:** Designed for energy efficiency and minimal environmental impact.



## Rigid PVC Conduits & Fittings

High-impact, unplasticized PVC conduits for safe and durable electrical installations. Compliant with IS 9537/1983 & IS 3419/1988.

### Applications:

- Concealed & surface wiring
- Telecommunication & cable ducting

### Key Features:

- Virgin suspension grade PVC (K-67)
- Twin-screw extruded for strength
- UV stabilized, weather resistant (-5°C to +60°C)
- Impact-resistant with minimum filler
- Available in Black, Grey, Ivory (other colors on request)

## Metallic Modular Boxes & Fan Boxes

Durable GI boxes with high-quality zinc coating for secure and shock-proof fittings.

### Key Features:

- Made from premium galvanized sheets (Tata, Jindal, Sail)
- Zinc coated (120 GSM) for rust resistance
- Earthing terminal for safety
- Threaded for easy installation
- Tested for 250 hrs red rust protection



# PVC PIPE & FITTINGS

(PLUMBING, DRAINAGE, AGRICULTURE)

Our PVC Pipes and Fittings provide a versatile, cost-effective solution for plumbing, drainage, and agricultural applications. Known for their lightweight and durable design, they ensure reliable performance and long-term durability in a variety of environments.

## S.W.R. Drainage System

Building drainage - fast and efficient removal of waste water and rainwater from residential, commercial and public projects

## U.G.D Underground Drainage and Sewer System

Underground Drainage and Sewerage Systems to carry soil and waste from building drainage system (S.W.R.) to roadside sewers or drains and from there to the treatment plant or disposal point

## uPVC High Pressure Plumbing System

Plumbing and potable water distribution in residential, commercial and industrial buildings, industrial process lines, sugar, paper and distillery industries etc.

## C-PVC Hot and Cold Water System

Hot and cold water distribution in residential, commercial and public projects, solar heater applications, firefighting mains, Industrial applications etc.

## PPR Pipes & Fittings

PPR pipes and fittings are resistant to many chemicals and are unaffected by UV light. resist high temperatures and pressures, making them ideal for potable water and wastewater systems to industrial and agricultural applications and hot water distribution systems.



# PAINTS

Discover our premium range of paints designed to provide exceptional coverage, durability, and vibrant finishes. Suitable for residential, commercial, and industrial applications, our paints ensure long-lasting protection and aesthetic appeal. Choose from a variety of colors and formulations to match your unique needs and style.

## USES:

- Interior and exterior wall protection
- Industrial coatings for equipment and structures
- Decorative finishes for homes and offices



## CP FAUCETS & SANITARYWARE

Elevate your bathroom and kitchen with our premium CP Faucets and Sanitaryware. Crafted with high-quality materials and sleek, modern designs, our products seamlessly blend functionality and style, making them perfect for both contemporary and traditional interiors. Durable, corrosion-resistant, and easy to maintain, they add an elegant touch to any space while ensuring long-lasting performance.



# WATER STORAGE TANKS

Our water storage tanks are designed for strength and longevity, featuring UV-resistant materials to withstand harsh conditions. Available in multiple sizes, they provide reliable water storage solutions for residential, commercial, and industrial needs.

## Features:

- UV-resistant and durable construction
- Available in various sizes and capacities
- Suitable for residential, commercial, and industrial use

## Applications:

- Residential water storage
- Commercial water management
- Industrial water supply systems

2 Layer Water Tank

3 Layer Water Tank

4 Layer Water Tank

5 Layer Foam Water Tank

6 Layer Double Foam Water Tank

7 Layer Foam Water Tank



Food Grade



Virgin Material



Weather Proof



Crack Free Tested Design



Anti-Microbial



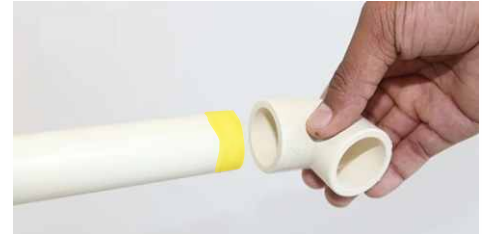
Long Lasting Colours

# SOLVENT, ADHESIVES & WATERPROOFING SOLUTIONS

Our premium Solvents and Adhesives deliver reliable bonding for pipe systems, ensuring leak-proof connections. Complemented by advanced waterproofing solutions, they safeguard structures from moisture, leaks, and wear, providing long-lasting durability.

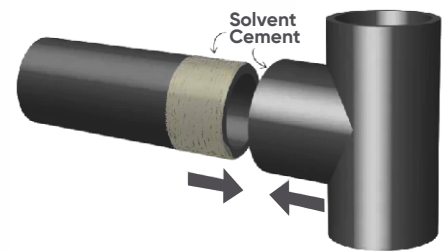
## Key Features:

- Strong and reliable pipe bonding
- Advanced moisture protection for structures
- Suitable for diverse applications

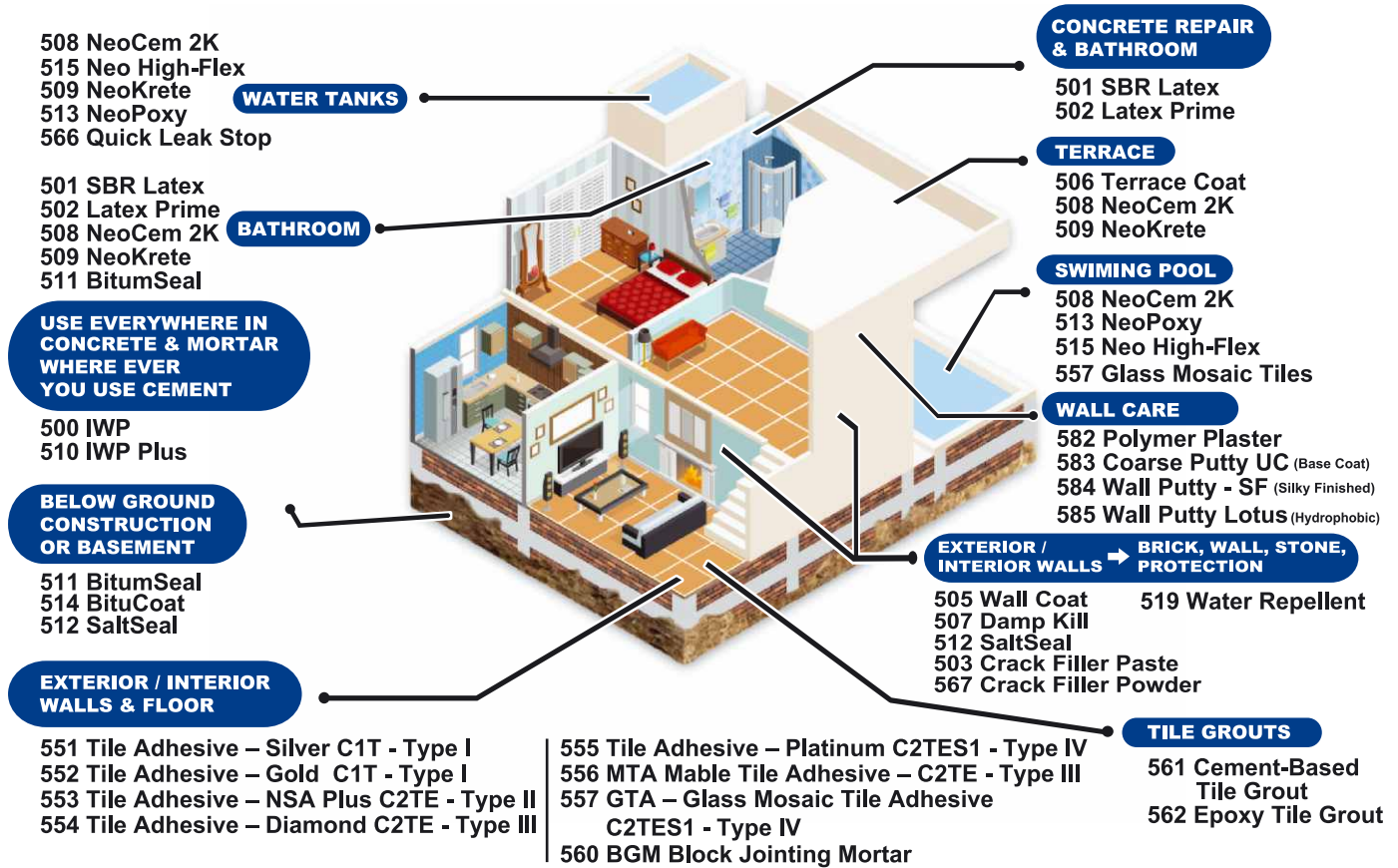


## Primary Uses:

- Pipe system installations
- Construction waterproofing
- Residential and industrial protection



## Product Application Areas



# RAINWATER HARVESTING SYSTEM

**COLLECT, STORE, AND REUSE RAINWATER FOR A SUSTAINABLE FUTURE.**

## Primary Uses:

- Reduces water bills and dependency on tanks.
- May offer property tax benefits (check local rules).
- Stores rainwater for gardening, flushing, cleaning, etc.
- Recharges groundwater levels.
- Easy to install and operate.
- Minimizes soil erosion, runoff, flooding, and water pollution.



Rain Gutter for Colletion



Gutter Fitting



Water Filter

# COMPLETE WATER TREATMENT FOR EVERY PLUMBING NEED

3M Home Water Filtration systems improve water quality at every stage - from incoming supply to drinking water - ensuring safety, clarity, and long-term plumbing protection.



## FULLY AUTOMATIC WATER SOFTENERS

### Hardness Control | Plumbing Protection

Reduces scale-forming minerals to protect pipelines, geysers, and appliances while improving water feel and soap efficiency.

## SCALE PREVENTION

### Anti-Scale Protection

Prevents scale build-up without removing essential minerals. Low maintenance solution for water heaters and plumbing systems.



## WATER FILTRATION

### Sediment & Particle Removal

Removes dirt, sand, rust, and suspended particles to improve water clarity and protect fixtures and fittings.

## CHLORINE REMOVAL

### Better Taste & Odour Control

Reduces chlorine content, improving water smell and taste while being gentle on skin, hair, and pipelines.



## DRINKING WATER SYSTEMS

### Safe & Clean Drinking Water

Delivers bacteria-safe, great-tasting water suitable for homes, offices, and institutions.

**3M | HOME**  
WATER FILTRATION

Introducing 3M™ VST 100  
Softens 90% of the bathroom water,  
while upgrading both style & comfort.

Compact      Aesthetic  
Quiet          Powerful

**3M | HOME**  
WATER FILTRATION

Water looks clean but still not, right?

Trust 3M™ Automatic Backwash Filtration System to do more.

- High-efficiency media
- Maintains steady water flow
- Built for high daily usage

Book a home visit.

**3M | HOME**  
WATER FILTRATION

Protect your fixtures from scaling.

3M™ Scale Prevention System

**3M | HOME**  
WATER FILTRATION

Unlock the secret to softer hair.

3M™ Fully Automatic Water Softener

**3M Safe Kitchen**

**3M | HOME**  
WATER FILTRATION

The focus is purely safety

3M™ Safe Kitchen

Schedule a consultation right now!



“ EXCELLENCE IS  
ACHIEVED THROUGH  
COLLABORATION  
WITH THE BEST.

 <b>LARSEN &amp; TOUBRO</b>	 <b>DILIP BUILDCON LIMITED</b> INFRASTRUCTURE & BEYOND	 <b>DRA</b>	 <b>NCC</b> Nagarjuna Construction Company Limited
 <b>PD AGRAWAL</b> GROUP		 <b>Vijay Kumar Mishra</b> Construction Pvt. Ltd.	
 <b>BSR</b> INFRATECH			 <b>RevoNext Waters</b> where innovation meets sustainability
 <b>KARAN</b> Development Services Pvt. Ltd.	 <b>Multiurban Infra</b> Services Pvt. Ltd. Beyond boundaries		 <b>GSD</b> CONSTRUCTIONS INDORE PVT. LTD.
 <b>Indian Hume Pipe</b>		 <b>KC</b> KESHAV KRUPA CONSTRUCTION PVT. LTD.	 <b>URC</b> Building Values
 <b>APEX</b> STRUCTURE	 <b>BANSAL</b> GROUP	 रेल विकास निगम लिमिटेड (एनएच सी २०१५) <b>Rail Vikas Nigam Limited</b> (A Government of India Enterprise)	 <b>MPMETRO</b>

# BRAND ASSOCIATION



ThinkTree Indore

## Pipe Traders

6 TS Navlakha Road,  
Loha Mandi, Indore - 452007

✉ pipetraders14@gmail.com

+91 98260 08467,  
0731-4095881

## Dahyalal T Shah

86 Taradevi Road, Siyaganj,  
Indore - 452001

✉ pipetrade@yahoo.com

+91 78800 37774

## Arham Enterprises

Survey No. 271/1/3,  
Kailod Hala, SDA Compound,  
Dewas Naka, Indore :- 452010

✉ arhamenterprises50@gmail.com

+91 78800 37711